

700/800

700/800-Series

ROTARY SWITCHES

The 700 and 800-Series are single pole multi-position, general purpose rotary switches. These switches feature a nylon actuator in a metal clad construction along with a self-cleaning silver plated contact design. The 700 and 800-Series are typically used in applications requiring multi-position speed controls, such as electric fans.



Product Highlights:

- ♦ Ratings to 3A 250VAC, 6A 125VAC
- ♦ Up to 8 available detent positions
- ♦ Double "D" bushing mount
- ♦ Sturdy metal clad construction

Typical Applications:

- ♦ Small Appliance
- ♦ Industrial Control
- ♦ Marine



Dielectric Strength

UL/CSA: 1000V (minimum)

Base Material

Steel/Zinc Plate

Insulation Resistance

100 Megohms (minimum)

Actuator Material

Brass/Nickel Plate

700-1A - BL

1 *Base Part Number* 2 *Knob Color*

1 BASE PART NUMBER: SERIES / POLES / CIRCUITRY 1 / RATING / TERMINATION 2

2A 250VAC; 4A 125VAC; 1A 125V

Solder Lugs	.250 Tabs	Position 1	Position 2	Position 3	Position 4	
-	700-A	OFF	ON	ON	ON	-
700-1	700-1A	OFF	ON	-	-	-
700-2	700-2A	OFF	ON	ON	ON	repeating for 8 positions
700-3	700-3A	OFF	ON	ON	OFF	-
700-4	700-4A	OFF	ON	ON	-	-
700-5	700-5A	OFF	ON	OFF	-	-
700-6	700-6A	-	ON	OFF	ON	-
700-7	700-7A	-	ON	ON	-	-
700-8	700-8A	-	ON	ON	ON	-
700-9	700-9A	OFF	ON	OFF	ON	-

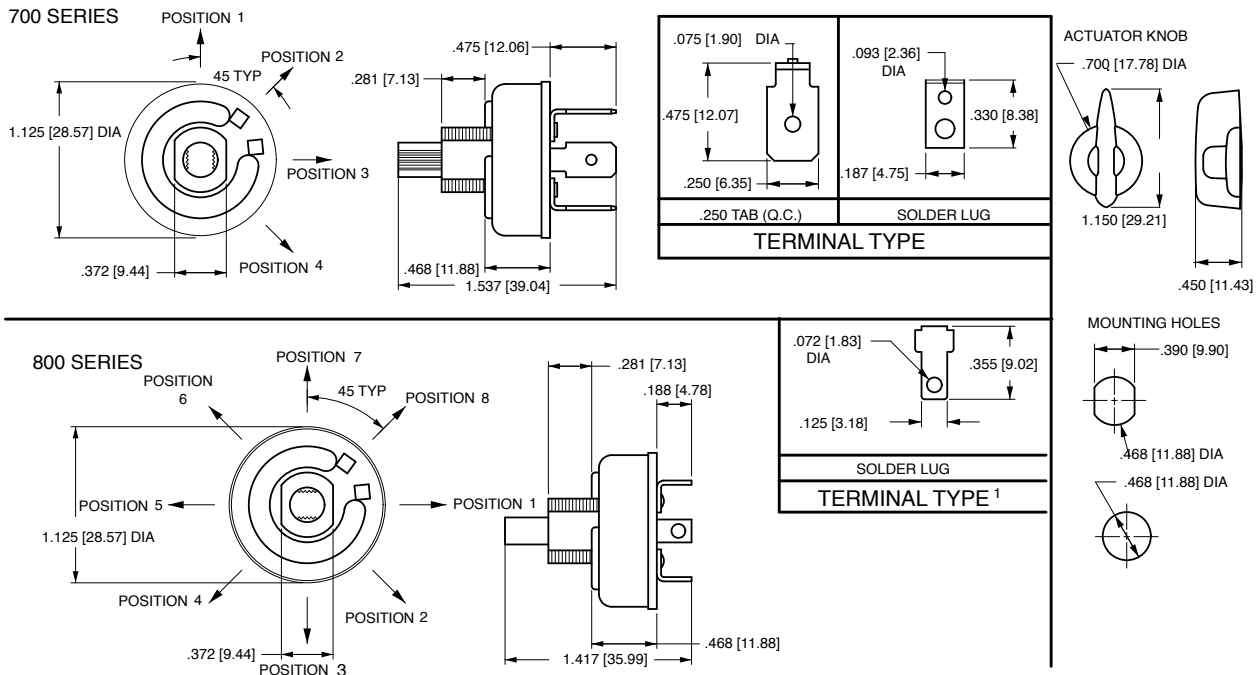
3A 250VAC; 6A 125VAC

Switch Positions	OFF Position
800-2 2 positions	800-A 1st position
800-3 3 positions	800-A2 2nd position
800-4 4 positions	800-A3 3rd position
800-5 5 positions	800-A4 4th position
800-6 6 positions	800-A5 5th position
800-7 7 positions	800-A6 6th position
800-8 8 positions	800-A7 7th position
	800-A8 8th position

2 ACTUATOR COLOR

BL Black

- Notes:
 1 700-2 and 700-2A feature 8 detent positions.
 2 800-Series terminal is a combination solder lug and quick connect.



- Notes:
 1. Terminal is combination solder lug and quick connect.

*Manufacturer reserves the right to change product specification without prior notice.